

cim tools

data integration and security

Data Integration Tools: CIM

Partners can automatically upload local and regional data to the GIS mapping engine. This option enables CIM Partners to overlay their local GIS data layers with the over 7,000 National Source GIS data layers to tell a more meaningful story about their community or region. Users can visualize data for their area of concern, and use GIS tools to illuminate priority issues in their own back yards.

Data that can be uploaded into CIM:

GIS Layers

Tabular Data

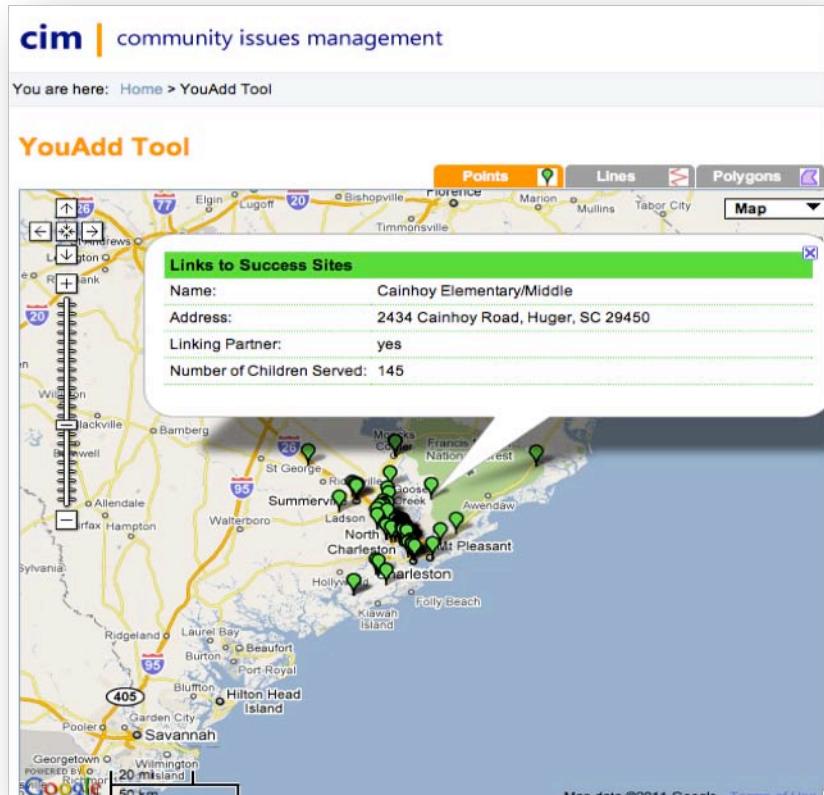
Address based data

Ability to create APIs

CIM Partners can save map sessions and custom reports – using their local data - to Issue Notebooks created by that organization.

Security

Administrative tools allow CIM Partners to manage communications, user accounts, data permissions and security settings. CIM Partners have maximum flexibility in assigning security levels (personal access, organization access, CIM Partner or public access) for each and every Issue Notebook, uploaded data layer, map, report or other content that is uploaded or hyperlinked to CIM. Setting varying security levels for content enables organizations to work internally or effectively engage the public around issues addressing their community. Often community issues require the engagement/involvement of multiple organizations. Security settings enable CIM Partners to invite individuals outside the their organization to have advanced access to selected Issue Notebooks and associated CIM functionality. Individuals outside the organization do not have access to internal organization data or sensitive Issue Notebooks that are used for internal use.



YouAdd Tool

CIM's unique YouAdd tool allows users to dynamically upload points, polygons and lines and assign unique attributes. Data is converted to GIS layers to use in the mapping and reporting rooms.