

cim tools

data visualization and collaboration

visualize

Map Room: The Map Room helps CIM Partners frame and manage GIS data layers by providing tools to organize data into two sections: “All Data” and “Highlighted Data.” The “All Data” section includes over 7,000+ national GIS data layers at the county, zip code, tract, block group, or point data level (e.g., socio-economic, demographic, health, education, and emergency preparedness, and a wealth of Census data including the American Community Survey). The dataset are updated and maintained on an ongoing basis. The “Highlighted Data” section includes only those GIS data layers selected from the “All Data” section that the organization would like to emphasize for their region (e.g., Education, Health and Income-related data only appears in the “Highlighted Data” section). *CIM Partners can save map sessions to Issue Notebooks created by that organization.*

analyze

Report Room: The Report Room helps CIM Partners frame and manage data by providing tools to organize data into two sections: “All Data” and “Highlighted Data” - similar to the Map Room. CIM’s reporting tool enables users to generate comparative dynamic reports (which may include bar charts, pie charts, etc.), about specific underlying social, economic, demographic and health characteristics for predefined geographic areas such as counties, cities and zip codes. *CIM Partners can save custom reports to Issue Notebooks created by that organization (in Word, PDF or interactive formats).*

collaborate

Issue notebooks: Issue Notebooks help CIM Partners frame and manage the issues they have identified to address over time. An organization begins by creating a new Issue Notebook that can be continuously edited or updated to track the development and progress made in addressing the issue. Notebooks include the following tab sections: Overview, Maps, Reports, Documents, Multimedia, Other Resources, and Take Action.

Library: The library is a space for viewing Issue Notebook content pulled together by an organization. Content may include interactive maps and reports, documents, videos, images, and presentations. A user can search the library by CIM Partner to find out what issues are being addressed in a given region.

Training and Support

CIM Partners have access to ongoing Web-based training and tutorials, user support, monthly peer learning calls, invitation to annual CIM Convening, and CIM newsletter.

cim tools

data integration and security

Data Integration Tools: CIM

Partners can automatically upload local and regional data to the GIS mapping engine. This option enables CIM Partners to overlay their local GIS data layers with the over 7,000 National Source GIS data layers to tell a more meaningful story about their community or region. Users can visualize data for their area of concern, and use GIS tools to illuminate priority issues in their own back yards.

Data that can be uploaded into CIM:

GIS Layers

Tabular Data

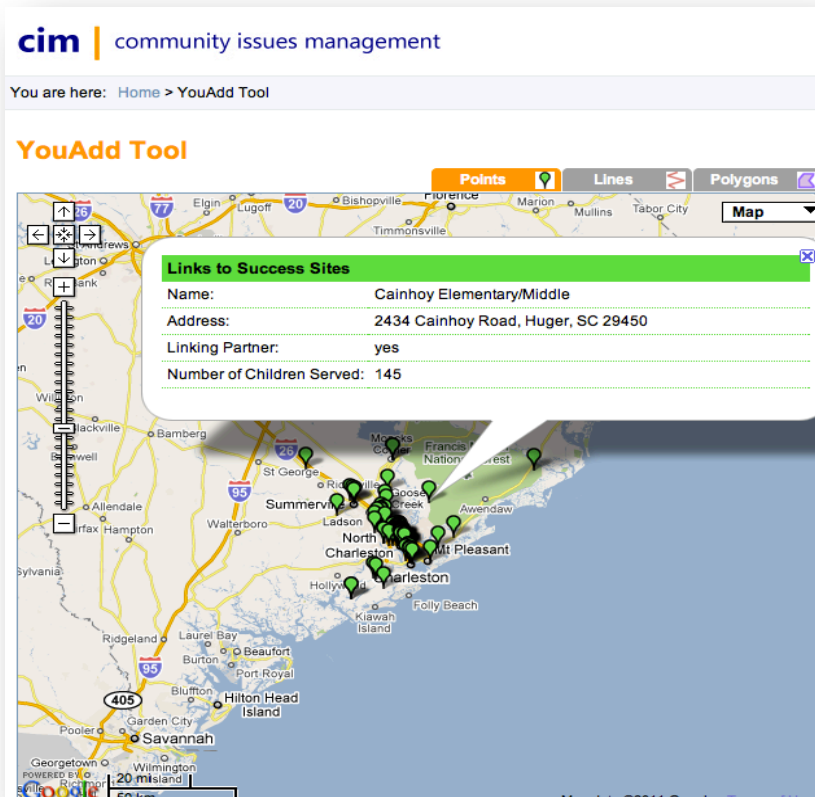
Address based data

Ability to create APIs

CIM Partners can save map sessions and custom reports – using their local data - to Issue Notebooks created by that organization.

Security

Administrative tools allow CIM Partners to manage communications, user accounts, data permissions and security settings. CIM Partners have maximum flexibility in assigning security levels (personal access, organization access, CIM Partner or public access) for each and every Issue Notebook, uploaded data layer, map, report or other content that is uploaded or hyperlinked to CIM. Setting varying security levels for content enables organizations to work internally or effectively engage the public around issues addressing their community. Often community issues require the engagement/involvement of multiple organizations. Security settings enable CIM Partners to invite individuals outside the their organization to have advanced access to selected Issue Notebooks and associated CIM functionality. Individuals outside the organization do not have access to internal organization data or sensitive Issue Notebooks that are used for internal use.



YouAdd Tool

CIM's unique YouAdd tool allows users to dynamically upload points, polygons and lines and assign unique attributes. Data is converted to GIS layers to use in the mapping and reporting rooms

| CIM Functionality and Services | Public User | CIM Partner |
|---|--------------------|--------------------|
| Issue Notebooks | | |
| Create, edit, delete Issue Notebooks | NO | YES |
| Upload or hyperlink to issue-specific content | NO | YES |
| Set security level for access to Issue Notebooks and all related content | NO | YES |
| View and add comments for individual issue notebook content | NO | YES |
| Email Issue Notebooks and individual content within the notebook | NO | YES |
| Search Library, view and download content | YES | YES |
| Maps and Reports | | |
| Access to over 7,000 National Source GIS data layers | YES | YES |
| Access to hundreds of Local Source GIS data layers for CIM Partner regions | YES | YES |
| Mapping and Reporting Tools | YES | YES |
| Print Maps and Reports in HTML or PDF format | YES | YES |
| Save Maps and Reports to Issue Notebook and assign security level | NO | YES |
| Provide description or interpretation of Map | NO | YES |
| Automatically convert report data to interactive map session | NO | YES |
| Data Integration | | |
| Automatically upload GIS data (Shapefile format) and set security level | NO | YES |
| Upload tabular data & automatically convert to GIS layers; set security level | NO | YES |
| Add points, lines or areas manually on top of base maps in CIM | NO | YES |
| Download GIS data (Shapefile format) | NO | YES |
| Other Services and Training | | |
| Monthly Webinars | NO | YES |
| Access to Online Tutorials | YES | YES |
| Facilitation support | NO | ADDITIONAL |
| Personalized training | NO | ADDITIONAL |
| Report customization | NO | ADDITIONAL |
| Consulting (Custom services, data preparation, analysis (e.g., geo-coding) | NO | ADDITIONAL |